



2020

\$20.00 FEE FOR SATURDAY NIGHT CAMPING

EMAIL US AHEAD OF TIME IF YOU ARE INTERESTED IN FRIDAY NIGHT CAMPING

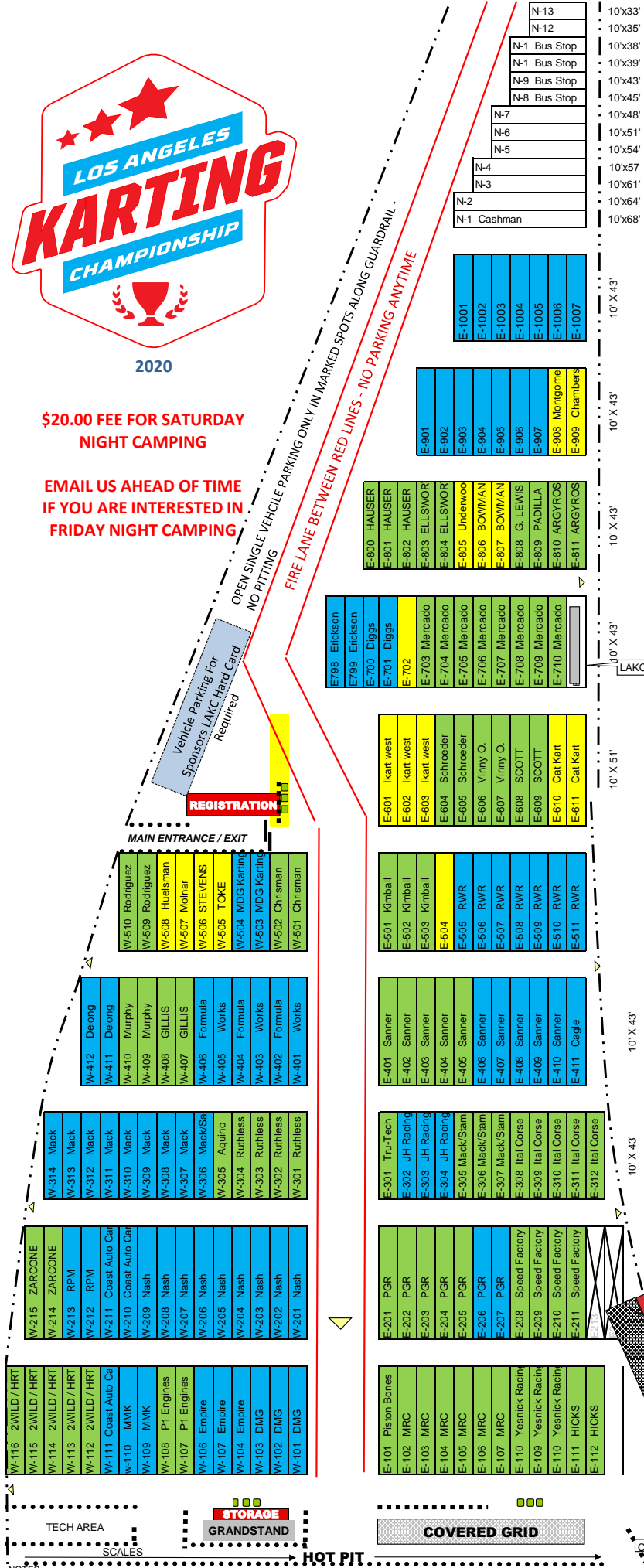
OPEN SINGLE VEHICLE PARKING ONLY IN MARKED SPOTS ALONG GUARDRAIL - NO PITTING

FIRE LANE BETWEEN RED LINES - NO PARKING ANYTIME

Vehicle Parking for Sponsors LAKC Hard Card Required

REGISTRATION

MAIN ENTRANCE / EXIT



10'x33'
10'x35'
10'x38'
10'x39'
10'x43'
10'x45'
10'x48'
10'x51'
10'x54'
10'x57'
10'x61'
10'x64'
10'x68'

10' X 43'

10' X 43'

10' X 43'

10' X 43'

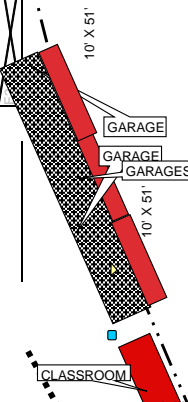
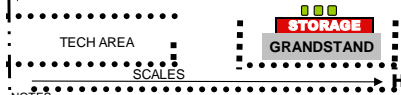
10' X 51'

10' X 43'

10' X 43'

10' X 51'

3 Antonino



1. All equipment must fit within your designated pit space. This includes: trailer, tents, karts, generators, tow- vehicles, pit carts, etc.
2. Any equipment that does not fit within your designated space must be parked in the open spaces in the northern end of the lot.
3. No parking permitted anytime outside pit spaces as these are designated fire lanes by the San Bernardino Fire Chief.
4. Do not park in reserved pit spots on Saturday or Sunday on LAKC race weekends. if it is not your spot
5. LAKC reserves the right to change or alter at any time for any reason.

Last Update 11/26/2018

